

FREE!

SONOMA COUNTY 2026 ZERO WASTE GUIDE

REUSE AND REPAIR

*We have everything
we need*

Eco-Desk
565-DESK (3375)
LLAME AL 565-3375
ZEROWASTESONOMA.GOV



**ZERO
WASTE**
SONOMA

ZERO WASTE

ABOUT US

The Zero Waste Guide is published by Zero Waste Sonoma (ZWS). The agency is the joint powers authority of the nine incorporated cities and the County of Sonoma. Zero Waste Sonoma's mission is to empower personal action in waste reduction and materials management by implementing practical solutions to protect our natural resources.

This guide is for informational purposes only. It should not be regarded as complete with respect to the products, services, or institutions it lists. It is not meant to be exclusive or exclusionary in any way, and it does not vouch for the capabilities, trustworthiness, or performance of any individual, business, or institution listed in these pages.

TABLE OF CONTENTS

BATTERIES	25
BUSINESS LAWS & ASSISTANCE PROGRAMS	7
COMPOST + SB 1383	12-13
CONSTRUCTION AND DECONSTRUCTION	24
COUNTY REFUSE DISPOSAL SITES	18-19
CURBSIDE SERVICES	8-9
DROP-OFF RECYCLING	20
ELECTRONICS (E-WASTE)	27
E-WASTE RECYCLING EVENTS	21
FLUORESCENT LAMPS	28
FOOD LOSS PREVENTION & FOOD DONATION	18-21
FREQUENTLY ASKED QUESTIONS	15
GLOSSARY OF TERMS	31
HOUSEHOLD HAZARDOUS WASTE	4-6
MATTRESS RECYCLING EVENTS	21
MATTRESSES	28
MEDICATIONS	29
MOTOR OIL AND FILTER RECYCLING	22-23
PAINT	26
POLICY	14
PROPANE (REFILLABLE)	10
REUSE + REPAIR	3
SHARPS/NEEDLES	29
WASTE HAULING COMPANIES	8
ZERO WASTE LIFESTYLE, REPAIR FAIRS	10-11

WHAT IS ZERO WASTE?

THE PROBLEM

Landfills (themselves a limited resource) are a significant source of the potent greenhouse gas methane, created when organic materials like food waste decompose without oxygen. Organics, recyclables, other items, and their packaging are resource-intensive to manufacture, transport, and dispose of at their end of life. They should instead be reused and recycled to sustain economies and healthy communities for the long term.

DEFINITION OF ZERO WASTE

Zero waste is a philosophy that promotes reuse, recycling, composting, and conservation programs and emphasizes sustainability by considering the entire life cycle of products and systems.

Source: Zero Waste North Bay zerowastenorthbay.org

WHAT DOES ZERO WASTE LOOK LIKE?

Zero Waste does not require perfection. Make gradual changes to lifestyle habits and consumer choices, and work towards bigger goals. Zero Waste Sonoma's vision is an engaged and informed community with the shared goal of thriving in a sustainable region without waste. Zero Waste supports:

- Reducing waste
- Promoting the best and highest use of material
- More sustainable consumption
- Resource conservation and preservation

SEE ZERO WASTE LIFESTYLE PAGE 10

ZEROWASTESONOMA.GOV

The Zero Waste Sonoma website is meant to serve as the best go-to resource for answering any and all recycling or disposal questions. This printed guide is updated and printed every year as a courtesy to the community.





REUSE + REPAIR

THE FOUR TYPES OF REUSE

Most people have heard of the phrase “Reduce, reuse, recycle” but over the last 40 years, the emphasis of many education campaigns has largely been on recycling. Let’s take a look at the other actions, why they’re important, how to participate, and how you can benefit.

“**Reduce**” refers to lowering our consumption of unnecessary things. In a time where online shopping requires a single click and shipping costs are often waived for larger purchases, many customers are buying excessively, with little consideration of the means of production, transportation, and disposal, let alone the waste associated with returned merchandise.

Repair, Refill, Resale, & Repurpose are the four types of **reuse** you can start practicing today! By doing so, you can keep the things you and others already have in use, save money, learn new skills, support local businesses, be creative, and much more!

REPAIR DON'T DESPAIR

A button sewn back on. A toy mended. A pair of boots resoled. Repairing what we have or enlisting the help of a handy person or local repair business can keep well-loved favorites in use for years ahead. Many places around Sonoma County offer beginning sewing/mending classes, and Repair Fairs or similar events offer free help from a volunteer to diagnose or repair broken items.



REFILL

Each time you top up instead of tossing out, you’re saying no to a single-use container and saying yes to real savings through a small change in habits. Sonoma County residents are fortunate to have six refill/zero waste retail shops that feature many locally made and package-free product options. Shop in bulk at your grocery store using a pre-tared and labeled container. And remember to bring your own (BYO) mug or cup when picking up a beverage to go, or ask the barista to serve your drink in a reusable cup if you want to enjoy it in-store.



RESALE AND EXHALE

Buying new isn’t always better in a time when the quality of manufacturing is questionable. Shopping secondhand can be joyful when you find what you need at a great price. In addition to the dozens of local thrift stores, many of which operate as nonprofit organizations and benefit local causes, there are numerous online marketplaces where you can buy, sell, trade, give, or search for everything from baby clothes to building materials.

REPURPOSE

Repurposing reminds us that creativity saves money and breathes new life into something that might otherwise be considered junk. Make a memory with a friend or family member and take on a small DIY project together like turning T-shirts into shopping bags or cleaning rags, a colander into an outdoor hanging planter, or an old pair of shutters into a colorful cabinet. The possibilities are endless!



THE LAND WE'RE ON

The ZWS office is located in Santa Rosa, on the ancestral home of the Southern Pomo people. We acknowledge the profound suffering caused by the ethnic cleansing and forced removal of communities, and grieve the ongoing systemic harm to Southern Pomo culture, as well as to all the Indigenous cultures of what is now called North America. We honor the Southern Pomo as the ancestral stewards of this land. We are grateful for the Federated Indians of Graton Rancheria, the Cloverdale Rancheria of Pomo Indians of California, and the Dry Creek Rancheria Band of Pomo Indians and all those in their communities who work to protect the ecosystem of the ancient home and care for Indigenous people and culture.

HOUSEHOLD HAZARDOUS WASTE (HHW) FOR RESIDENTS

THREE SERVICE OPTIONS

#1: HHW FACILITY



The HHW Facility is open weekly for free drop-off of household hazardous waste from Sonoma County residents. Bring your ID to prove residency.

APPOINTMENT: NOT REQUIRED.

For questions, call
(707) 795-2025 or
(877) 747-1870

HOURS: Thursday, Friday, and
Saturday
7:30A-2:30P

LOCATION: Central Disposal Site
(Bldg. 5)
500 Mechem Rd
Petaluma

The Household Hazardous Waste Facility will be closed on the 4th of July • Labor Day • Thanksgiving Day • December 20, 2026 - January 4, 2027

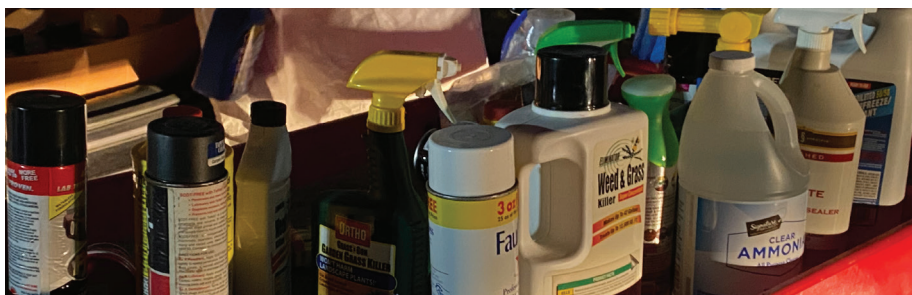
#2: HHW COLLECTION EVENTS

Every week there is an HHW collection somewhere in Sonoma County. Bring your ID to prove residency. 80 appointments maximum per event.

APPOINTMENT: REQUIRED. Visit zerowastesonoma.gov/calendar to schedule. Call (707) 795-2025 option 3 or email toxicsdisposal@cleanharbors.com

HOURS: Tuesdays 4-8P, *Sea Ranch event is Saturday

LOCATION: Location of the event will be provided when you schedule your appointment. Appointment must be made at least 12 hours prior to the event.



EVENTS SUBJECT TO CHANGE

JANUARY 2026

6 SANTA ROSA, E
13 SEBASTOPOL
20 HEALDSBURG
27 LARKFIELD

APRIL 2026

7 PETALUMA
14 SANTA ROSA, E
21 FORESTVILLE
28 HEALDSBURG

JULY 2026

7 SANTA ROSA, E
14 KENWOOD
21 HEALDSBURG
28 MONTE RIO

OCTOBER 2026

6 KENWOOD
13 SANTA ROSA, E
20 GUERNEVILLE
27 HEALDSBURG

FEBRUARY 2026

3 COTATI
10 KENWOOD
17 RINCON VALLEY
24 CLOVERDALE

MAY 2026

5 LARKFIELD
12 SEBASTOPOL
19 CLOVERDALE
26 SANTA ROSA, W

AUGUST 2026

4 SANTA ROSA, W
11 PETALUMA
18 CLOVERDALE
22 SEA RANCH*
25 LARKFIELD

NOVEMBER 2026

3 PETALUMA
10 SANTA ROSA, W
17 CLOVERDALE
24 NO EVENT

MARCH 2026

3 SANTA ROSA, W
10 GUERNEVILLE
17 SONOMA
24 WINDSOR
31 OAKMONT

JUNE 2026

2 SONOMA
9 ROHNERT PARK
16 OAKMONT
23 WINDSOR
30 BODEGA BAY

SEPTEMBER 2026

1 SONOMA
8 OAKMONT
15 SEBASTOPOL
22 WINDSOR
29 ROHNERT PARK

DECEMBER 2026

1 SONOMA
8 WINDSOR
15 OAKMONT
22 NO EVENT
29 NO EVENT

TRANSPORTING AND PACKING YOUR MATERIAL: State transportation laws limit each vehicle to a maximum of 15 gallons of liquid (with a maximum of 5 gallons per container) or 125 pounds of solid material. Liquid limits are measured by the outer size of the container, not the contents. • Never mix chemicals. • Place in sealed containers in the trunk, packed to prevent spills. • Sharps must be in a sealed and labeled approved container. **SEE SHARPS/NEEDLES PAGE 29**

NOT ACCEPTED: Explosives or ammunition • Radioactive materials • Biological waste (sharps/needles okay) • Controlled substances • Compressed gas cylinders (propane cylinders 20 pounds or under okay) • Electronics **SEE ELECTRONICS (E-WASTE) PAGE 27**

3: HHW ROVER PICKUP SERVICE

Each Wednesday, the HHW Rover serves a different region of Sonoma County. Home pickup services are provided on a first-come-first-served basis. Allow several weeks advance notice.

FEE: \$50/pickup (limit 440 pounds or 54 gallons). Free pickup available for seniors over 80 years of age and housebound residents.

APPOINTMENT: Call (707) 795-2025 option 4 or toll-free (877) 747-1870 or email toxicsdisposal@cleanharbors.com

HOURS: Wednesdays, limited appointments available.



FREE PRODUCTS AT THE REUSE LOCKER

The reuse locker is located in the storage units in the lower area near the Household Hazardous Waste Facility. Available on a first-come-first-served basis.

SEE HHW FACILITY PAGE 4

SEE PAINT PAGE 26



COMMON EXAMPLES OF HOUSEHOLD HAZARDOUS WASTE

Household hazardous wastes are any unwanted products commonly labeled as toxic, poison, combustible, corrosive, flammable, or irritant, etc.

YARD: Fertilizers • Fungicides • Insecticides • Pesticides • Pool chemicals • Propane cylinders, 5 gallons and smaller • Rodenticides • Weed killers

HOUSE: Aerosol sprays • Asbestos • Batteries • Cleaners • Cosmetics • Fire extinguishers • Fluorescent lamps • LED lights • Medications★ • Nail polish and remover • Sharps/needles★ • Toiletries • Vape pens★

GARAGE: Antifreeze • Auto batteries • Automatic transmission fluid • Brake fluid • Engine cleaners • Fuel such as butane, diesel, gasoline, kerosene and lamp oil • Motor oil and filters • Power-steering fluid • Road flares

WORKSHOP: Flammable liquids and solids • Glues • Paint • Paint thinners • Photo chemicals • Solvents • Wood finishes

★ RESIDENTS ONLY

HOUSEHOLD HAZARDOUS WASTE (HHW) FOR BUSINESSES



WHAT IS THE PROCESS?

1. Download Business Hazardous Waste Disposal Forms from zerowastesonoma.gov
2. Obtain a Hazardous Waste EPA ID number (if needed).
3. Submit paperwork by fax or email to receive an appointment and pricing information.

WILL THIS PROGRAM MEET THE DISPOSAL REQUIREMENTS OF REGULATING AGENCIES?

You will receive a receipt of disposal for your records that will satisfy regulatory disposal requirements. Receipts and all records should be kept for a minimum of three years.

DOES USING THIS PROGRAM MEAN MY BUSINESS WILL BE INSPECTED FOR HAZARDOUS WASTE?

Zero Waste Sonoma is not a regulatory agency.

WHO ARE THE REGULATORY AGENCIES FOR MY BUSINESS?

Contact the Certified Unified Program Agency (CUPA) for your area:

Healdsburg (707) 431-3360

Petaluma (707) 778-4389

Santa Rosa (707) 543-3500

All other areas (707) 565-1152



TWO SERVICE OPTIONS FOR BUSINESSES

Services are available for businesses that qualify as Very Small Quantity Generators per regulations (CCR Title 22 §66260.10), which are businesses that generate a maximum of 27 gallons of liquid or 220 pounds of solids of hazardous waste per month.

#1: HHW FACILITY BUSINESS PROGRAM

Located at the Central Disposal Site, the HHW Facility is open for drop-off of hazardous waste from qualified Sonoma County businesses.

APPOINTMENT: REQUIRED. Call (707) 795-2025 option 2 or toll-free (877) 747-1870 or email toxicsdisposal@cleanharbors.com

FORMS & FEES: PAPERWORK REQUIRED. Download forms at zerowastesonoma.gov, \$25 processing fee plus disposal fees based on type and quantity of waste

HOURS: Tuesdays and Wednesdays 8:30A–1:30P

LOCATION: Central Disposal Site (Bldg. 5) 500 Mecham Rd, Petaluma

The Household Hazardous Waste Facility will be closed on the 4th of July • Labor Day • Thanksgiving Day • December 20, 2026 - January 4, 2027

#2: HHW COLLECTION EVENTS BUSINESS PROGRAM

Every week there is an HHW collection event somewhere in Sonoma County. Space may be limited for business appointments and is based on availability.

APPOINTMENT: REQUIRED.

Call (707) 795-2025 option 2 or toll-free (877) 747-1870 or email toxicsdisposal@cleanharbors.com

FORMS & FEES: PAPERWORK REQUIRED.

Download forms at zerowastesonoma.gov, \$25 processing fee plus disposal fees based on type and quantity of waste.

HOURS: Tuesdays 4–8P

SEE PAGE 4 FOR HHW COLLECTION EVENT SCHEDULE



BUSINESS POLICY & ASSISTANCE PROGRAMS

DISPOSABLE FOOD SERVICE WARE AND POLYSTYRENE FOAM BAN BASED ON THE ZERO WASTE SONOMA MODEL ORDINANCE

APPLIES TO FOOD/BEVERAGE PROVIDERS, RETAILERS, SPECIAL EVENT PROMOTERS, GOVERNMENT ENTITIES, CONTRACTORS, AND LESSEES.

Jurisdictions in Sonoma County have adopted local ordinances to ban the sale of certain polystyrene foam products and limit the use of non-recyclable or non-compostable disposable food ware. Please confirm specific requirements within your jurisdiction.

ABOUT THE LOCAL ORDINANCES

- Prohibit polystyrene foam food ware and food ware containing per- and polyfluoroalkyl substances (PFAS) distributed by food and beverage providers.
- Prohibit polystyrene foam food ware and specified polystyrene foam products sold by retail stores.
- Require food/beverage providers and some special events to use locally compostable or recyclable single-use food service ware and accessories.
- Require food/beverage providers to provide single-use straws, lids, cutlery, and to-go condiment packages only upon request.
- Encourage use of reusables.

For more information and to report noncompliant businesses, visit zerowastesonoma.gov/foodware

POLYSTYRENE FOAM IS BANNED



SB 270

STATEWIDE SINGLE USE CARRYOUT BAG BAN

APPLIES TO ALL GROCERY STORES AND RETAIL ESTABLISHMENTS.



- Beginning 1/1/26, stores will only be permitted to distribute recycled paper bags to customers at the point of sale.
- Prohibits all single-use plastic carryout bags.
- Produce bags can no longer be plastic either, so customers can expect paper or bioplastic bags (but remember that bioplastic goes into black/grey carts and to landfill in Sonoma County).

BUSINESS ASSISTANCE PROGRAMS

RECYCLING MARKET DEVELOPMENT ZONE (RMDZ)

NorthBayRMDZ.org

Sonoma County is part of California's Department of Resources Recycling and Recovery (CalRecycle) RMDZ program. The program seeks to combine recycling with economic development to fuel new businesses, expand existing ones, create jobs, and divert waste from landfills.

Resources available include attractive loans, technical assistance, and free product marketing to businesses that use materials from the waste stream to manufacture their products.

SONOMA COUNTY GREEN BUSINESS CERTIFICATION

sonomacounty.gov/green-business

The Sonoma Green Business Program recognizes businesses, nonprofit organizations, and municipal offices in Sonoma County that meet high environmental standards. The Green Business Program is a voluntary and no-cost certification that looks at specific measures regarding energy, water, waste, pollution prevention, and best practices.



CURBSIDE SERVICES FOR RESIDENTS

Bulky item pickup means that certain items such as mattresses, appliances, furniture, excess yard debris/organics (bagged or bundled), and electronics★ that cannot fit into a cart or that need special handling will be picked up by appointment. This service is available for residential hauling company customers for a fee or at no extra cost depending on jurisdiction. ★ Not available in Petaluma

RECOLOGY SONOMA MARIN (800) 243-0291

Recology.com/SonomaMarin

CLOVERDALE

FREE BULKY ITEM PICKUP

COTATI

FREE BULKY ITEM PICKUP

HEALDSBURG

FREE BULKY ITEM PICKUP

PETALUMA

FREE BULKY ITEM PICKUP

ROHNERT PARK

FREE BULKY ITEM PICKUP

SANTA ROSA

FREE BULKY ITEM PICKUP

UNINCORPORATED AREA

FREE BULKY ITEM PICKUP

SONOMA COUNTY RESOURCE RECOVERY (707) 795-7470

SonomaCORR.com

SEBASTOPOL

FREE BULKY ITEM PICKUP

WINDSOR

FREE BULKY ITEM PICKUP

SONOMA GARBAGE COLLECTORS

(707) 996-7555

SonomaGarbage.com

SONOMA, CHANTARELLE, CREEKSIDE, AND TEMEC

COST FOR BULKY ITEM PICKUP

COMPOST

ALL FOOD SCRAPS, YARD DEBRIS, AND FOOD-SOILED PAPER ARE
ACCEPTED IN THE GREEN CART THROUGHOUT SONOMA COUNTY.



SHREDDED PAPER

RECOLOGY SONOMA MARIN CUSTOMERS ONLY



OKAY TO PLACE ONE
PAPER BAG OF SHREDDED
PAPER IN COMPOST CART
EACH WEEK.

NOT ACCEPTED Animal/pet waste • Ashes •
Bamboo★ • Cactus★ • Dirt, rocks, or sod • Glass
• Liquid waste • Manure • Palm fronds★ •
Pampas grass★ • Plastics including those labeled
biodegradable or compostable★ • Poison oak •
Sudden Oak Death infested material • Tree stumps
★ Acceptable in the City of Sonoma only.

MOTOR OIL



AVAILABLE TO ALL RESIDENTIAL HAULING COMPANY CUSTOMERS

CHANGE YOUR OIL AND DRAIN
THE FILTER FOR 48 HOURS.

TRANSFER OIL TO AN OIL
RECYCLING CONTAINER OR A
CLEAN, DRY PLASTIC JUG WITH
A SCREW-ON LID.

PLACE OIL FILTER IN A ZIP
CLOSURE BAG.

PLACE BOTH NEXT TO YOUR
BLUE CART FOR PICKUP.

NOT ACCEPTED Antifreeze •
Brake fluid • Engine cleaner •
Fuel • Hydraulic fluid • Water
DO NOT CONTAMINATE MOTOR OIL

CALL THE HAULER IN YOUR
AREA FOR A MOTOR OIL
RECYCLING KIT AND TO
SCHEDULE PICKUP.



RECYCLE

PAPER, CARDBOARD, AND CARTONS



GLASS BOTTLES AND JARS



METAL



PLASTIC CONTAINERS



SHREDDED PAPER

SONOMA GARBAGE COLLECTORS CUSTOMERS ONLY



FOR CUSTOMERS OF SONOMA GARBAGE COLLECTORS, PUT SHREDDED PAPER IN A CLEAR PLASTIC BAG INSIDE THE CART.

HOUSEHOLD BATTERIES

AAA • AA • C • D • 9-volt



SEE BATTERIES, HOUSEHOLD PAGE 25

TO PREVENT FIRES:

TAPE THE TERMINALS OF ALL RECHARGEABLE BATTERIES AND ALKALINE BATTERIES 9-VOLT OR LARGER WITH HEAVY-DUTY CLEAR TAPE.

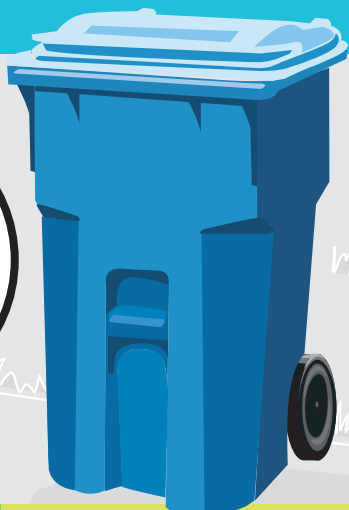
PLACE BATTERIES IN A CLEAR BAG AND SEAL FIRMLY.

PLACE BAG **ON TOP** OF BLUE RECYCLE CART FOR PICKUP.



NOT ACCEPTED Ceramic dishware • Clothing, linen, and rags • Coat hangers • Corks (natural and plastic) • Electronics • Food scraps • Glass mirrors and windows • Glassware • Light bulbs • Plastic bags, wrappers, and film • Plastic items mixed with metal, fabric, or rubber • Plastics labeled biodegradable or compostable • Soiled paper • Styrofoam™ • Waxed cardboard or paper • Wood • Yard trimmings

DON'T BAG RECYCLABLES. UNLESS OTHERWISE NOTED, PLACE YOUR RECYCLABLES LOOSE IN YOUR CART.



Check out the resources page on our website for labels you can print at home!



HOW CLEAN DO YOUR RECYCLABLES NEED TO BE?

Recyclables are economic commodities. Cleaner items are more likely to be recycled. Bottles and containers need to be empty of food and liquid. Paper needs to be clean and dry. Follow the steps below:

POUR OUT LIQUIDS

SCRAPE OUT FOOD FROM RECYCLABLES

WIPE OUT STICKY OR OILY RESIDUE FROM RECYCLABLES

GREASY, GOOEY, WET, OR FOOD-SOILED PAPER GOES IN YOUR COMPOST CART

TIP: KEEP CAPS ON



It is preferable to leave screw-top lids on empty plastic, glass, paper cartons, and metal containers. If lids are removed from the container, they are too small to be recycled.

WINDSOR ONLY



In Windsor, your recyclable materials must be separated. Put metal, glass, and plastic containers on the blue side and put cardboard and paper on the yellow side. Place shredded paper in a paper bag inside the yellow side.

ZERO WASTE LIFESTYLE

CHOOSE REFILLABLE PROPANE CYLINDERS



California has banned the sale of single-use propane cylinders. Beginning January 1, 2028, all propane cylinders sold in California must be refillable or reusable. Save money and the environment by ditching single-use.



GUALALA

GUALALA SUPERMARKET
39225 CA-1
(707) 884-1205
* SELLS FULL CYLINDERS ONLY

PETALUMA

DE CARLI'S PROPANE
423 WILSON ST
(707) 762-4511
* REFILLS ONLY

ROHNERT PARK

WALMART
4625 REDWOOD DR
(707) 586-3717
* SELLS FULL CYLINDERS ONLY

SANTA ROSA

REI COOP
2715 SANTA ROSA AVE
(707) 540-9025
* LITTLE KAMPER ONLY

SPORTS BASEMENT
1970 SANTA ROSA AVE
(707) 921-3147
* FLAME KING ONLY

WINDSOR

WALMART
6650 HEMBREE LN
(707) 836-7200
* SELLS FULL CYLINDERS ONLY

Dispose of empty, single-use propane cylinders 5lbs or smaller at the Household Hazardous Waste Facility at 500 Mecham Rd, Petaluma. Open Thurs, Fri, & Sat 7:30A - 2:30P, bring

CLOTHING SWAPS, ROUND ROBINS, AND MENDING

Do you want to refresh your wardrobe? Consider hosting or attending a clothing swap instead of shopping on the internet! Bring together folks from your community to bond and share the pieces you aren't reaching for from your closet. Many people find it easier to part with items that no longer suit their use when they know they will be worn and appreciated by someone else.

Round robins are another option for exchanging clothing! Size-based round robins organized through neighborhood groups allow sharing of resources with a lower barrier to entry. One person picks up the load of clothing to bring home and try them on, keeps what works, and adds whatever they are ready to share. Simply coordinate with the next person on the list and pass it off to them.

Mending garments with tears or holes is a wonderful way to keep your clothes functional. Do you want to learn how to mend? Keep your eyes peeled on events hosted by the following organizations.

REUSE ALLIANCE
reusealliance.org
2200 PETALUMA BLVD N #220
PETALUMA
(707) 774-6039

SONOMA COUNTY LIBRARY
sonomalibrary.org
VARIOUS LOCATIONS
(707) 632-4591

HONEYFOLK CLOTHING
honeyfolkclothing.com

SEBASTOPOL GRANGE
sebastopolgrange.org
6000 SEBASTOPOL AVE,
SEBASTOPOL
(707) 331-4400

FIBER CIRCLE STUDIO
fibercirclestudio.com
113 KENTUCKY ST,
PETALUMA
(707) 774-6101

SLOUGH CITY MONTHLY MEND
sloughcity.com
(707) 870-9945
409 PETALUMA BLVD S,
SUITE C PETALUMA
Monthly Mend workshops

FIBER SNOB
fibersnob.com
641 FOURTH ST,
SANTA ROSA
Weekly classes

AMERICAN SEWING GUILD SANTA ROSA
asgsantarosa.org

COMMUNITY MARKET
cmnaturalfoods.com
6762 SEBASTOPOL AVE,
PETALUMA
(707) 407-4020
Weekly fiber crafting and
periodic clothing swaps

SONOMA COMMUNITY CENTER
sonomacommunitycenter.org
276 EAST NAPA STREET,
SONOMA
(707) 938-4626
Weekly fiber arts open studio

THE PROBLEM OF TEXTILE WASTE

Textiles are the fastest growing component of California's landfills, comprising 3% of total landfilled waste and the fifth most common material overall. In 2021, about 1.2 million tons of textiles were disposed of, costing California taxpayers more than \$70 million. The textile industry is considered a top industrial polluter. In addition to the methane created by decomposing textiles in landfills, the industry creates about 10% of global carbon emissions. In addition, the culture of "fast fashion," or creating cheap and low-quality clothes designed to be worn a few times and then disposed of, harms the environment surrounding the production facilities, exploits workers, and harms animals.

Some clothing brands have begun to respond to this crisis by committing to increased use of recycled fibers or garment repair and resale programs. Support these programs and companies that are considering their impact!

Source: CalRecycle www.calrecycle.ca.gov



REPAIR FAIRS

Repair Events are an effective strategy for reducing waste sent to landfill. Community members can bring damaged and broken belongings for fixing assistance. Some of the tangible benefits of these events are saving residents money, increasing awareness about reuse as a priority action separate from recycling, improving self-reliance, and inviting joy and gratitude among many participants. We are pleased to partner with Reuse Alliance to host at least one event in each jurisdiction this year and into the future.

 **JANUARY 24**
HEALDSBURG

 **MARCH 29**
COTATI

 **JUNE 14**
SEBASTOPOL

 **FEBRUARY 7**
PETALUMA

 **APRIL 19**
WINDSOR

 **OCTOBER 8**
SANTA ROSA

 **MARCH 7**
CLOVERDALE

 **MAY 16**
SONOMA

 **OCTOBER 17**
ROHNERT PARK

Visit reusealliance.org/events for more information, to pre-register an item for repair, or sign up to volunteer.



HOST YOUR OWN REPAIR FAIR IN YOUR COMMUNITY

ZWS IS OFFERING REPAIR FAIR/FIX-IT CLINIC MINI GRANTS

Funding up to \$500 is open to community groups and nonprofits hosting local repair fairs. Funds may be used to cover marketing/advertising, space rental, stipends for fixers and volunteers, and other associated costs to host the event. Reach out to zerowastesonoma@sonomacounty.gov for more information.

ZERO WASTE EVENTS

Events can be inherently wasteful, but there are a number of strategies that can be implemented to reduce the waste produced from large gatherings, which contributes significantly to climate change. Find our Zero Waste Event Guide on our website.

Recology-Waste Zero Event Rebate Program now available for events hosted in their service areas. Pop-up bins, signage, and water refill station may be available to borrow. First come, first served. Visit the Resources for a Waste Zero Event page on the Recology website for more information.

[RECOLOGY.COM/RECOLOGY-SONOMA-MARIN/RESOURCES-FOR-A-ZERO-WASTE-EVENT/](https://recoLOGY.COM/RECOLOGY-SONOMA-MARIN/RESOURCES-FOR-A-ZERO-WASTE-EVENT/)
FIND THE ZERO WASTE EVENT GUIDE AT ZEROWASTESONOMA.GOV/RESOURCES/ZERO-WASTE-EVENTS
FOR MORE TIPS, VISIT [STOP FOOD WASTE STOPFOODWASTE.ORG](https://STOPFOODWASTE.ORG)



ZERO WASTE WEEK



NORTHBAYZEROWASTEEWEEK.ORG/

Zero Waste Week is a grassroots approach to raising awareness about the environmental impacts of waste and ways to live a more zero waste lifestyle.

In October, groups around the North Bay Area demonstrate how they are part of the solution through public education events and activities that focus on reducing, reusing, recycling, repurposing, and composting. Zero Waste can also apply to resource use like water and energy conservation. This is about mindful use and consumption. Anyone can be part of the solution!

Want to host an event? We want to learn from you!



POLICY: SB 1383

SHORT-LIVED CLIMATE POLLUTANTS

SELF-HAUL?

RESIDENTS LIVING IN UNINCORPORATED AREAS MAY CHOOSE TO SELF-HAUL INSTEAD OF SUBSCRIBING TO CURBSIDE COLLECTION SERVICE. BE SURE TO SEPARATE FOOD SCRAPS, YARD DEBRIS, AND OTHER ORGANIC MATERIAL FROM THE GARBAGE BEFORE TRANSPORTING TO A FACILITY OR SITE THAT WILL COMPOST IT. PLEASE KEEP COPIES OF WEIGHT TICKETS.

MORE INFO AND DROP-OFF SITES

Find a site near you at:
zerowastesonoma.gov/materials/yard-debris-food-scraps

See page 8 for what materials can be composted.



BUSINESSES

ZWS-SB1383@SONOMACOUNTY.GOV

TECHNICAL ASSISTANCE

Does your business need sorting guides, staff training, translation, or other assistance with SB 1383? Contact us at zws-SB1383@sonomacounty.gov

ZERO FOODPRINT

Become a member of Zero Foodprint and commit to ongoing contributions (typically 1% of sales) that support regenerative farming in Sonoma County and slow climate change. Learn more at: zerofoodprint.org



WHAT IS SB 1383?

IN EFFECT SINCE JAN 1, 2022, SENATE BILL 1383 IS A COMPREHENSIVE STATE LAW AIMED AT REDUCING GREENHOUSE GAS EMISSIONS TO SLOW CLIMATE CHANGE.

WHAT THIS MEANS FOR YOU

- Organics or organic materials mean food scraps, yard debris, non-hazardous wood scrap, napkins, and other food-soiled paper.
- Commercial entities include for-profit and nonprofit organizations, public and private schools, government buildings, and multifamily residential dwellings. These have their own requirements.
- All residents and commercial entities are required to separate organics and recyclables from the garbage in one of two ways:
 - Sort them into green and blue bins to be composted and recycled, or
 - Self-haul their organics and recyclables to facilities that will compost the organics and recycle the recyclables.

SEE CURBSIDE SERVICES PAGE 8



BEST PRACTICES FOR ORGANICS COLLECTION

- **Drain liquid and keep it cool.** When collecting organics in your kitchen, liquids and warm temperatures speed up decomposition, which increases odors. If possible, keep your container in a cool area such as the fridge or freezer until collection day.
- **Mix in yard debris or paper products.** Whether in your kitchen collection container or your outdoor bin, place a bottom layer of used napkins, paper towels, paper bags, paper egg cartons, newspaper, pizza boxes, or yard debris to absorb excess moisture and keep the container/bin clean.
- **Keep glass, plastic, metal, and garbage out of the green bin.** Glass and plastic placed in the green bin end up in the finished compost that is spread on gardens and farms. Metal can damage shredding equipment at a compost facility. Remember to remove produce stickers, twist ties, and plastic bags from food scraps.
- **Clean your outdoor bin regularly.** Hose down your green bin and let it drain over your lawn instead of the street drains, which lead directly into rivers. Once a year upon request, your hauler will swap out your bin for a clean one at no extra cost.

FOOD WASTE PREVENTION AND PRESERVATION



- Find versatile recipes on the Zero Waste Chef blog or cookbook: zerowastechef.com
- Keep containers with grocery totes in your car or your bag, so when you encounter leftovers at a party or restaurant, you can bring them home safely.
- Consider preserving edible food scraps as refrigerator pickles, sauce, or broth material in the freezer for later.
- Dry, can, pickle, or freeze extra produce that you may not use immediately. It can easily be tossed into stews, blended into soups/sauces, or cooked in pies and jams.
- Use sight and smell to evaluate food for spoilage. Many foods are perfectly safe to eat past the printed date. Except for infant formula, product dating is not required by federal regulations. Manufacturers generally print dates to help a store determine how long to display the product for sale, and not as an indicator of food quality.

GLEANNING FRUIT FROM YOUR YARD

Do you have more fruit than you can eat in your yard? Reach out to a local gleaning organization who will harvest the excess fruit. They will take your donated fruit to a local food bank or pantry and distribute it to people who are food insecure.

Find a local organization at zerowastesonoma.gov/materials/food.



FEED PEOPLE, NOT LANDFILLS!



Under SB 1383, large food-producing entities, called Tier I and Tier II Entities, are required to donate excess food to feed people. Tier I and II Entities include supermarkets, grocery stores, wholesalers, food distributors, restaurants over 5000 sq ft., and education facilities.

Food must be safe to eat, whole, unserved, and/or in unopened and original packaging although it might be blemished, less marketable, or slightly stale.

For more information and resources, visit zerowastesonoma.gov/SB1383

Zero Waste Sonoma has partnered with Conservation Corps North Bay to increase edible food diversion in Sonoma County. **Are you affiliated with a Tier I or II generator that hasn't begun the process yet?** Reach out to the ZWS Eco-Desk (707) 565-3375 for more information and help.



For recipes, videos, and more information, ask a Master Food Preserver.

MASTER FOOD PRESERVERS
ucanr.edu/sites/mfp
mfp@ucanr.edu
(707) 565-3026



POLICY

AB 660 FOOD AND BEVERAGE LABELING

REQUIRES FOOD MANUFACTURERS TO USE UNIFORM TERMINOLOGY WHEN LABELING THEIR PRODUCTS WITH "SAFETY" OR "QUALITY" DATES AND BANS THE USE OF CONSUMER-FACING "SELL BY" DATES BY 7/1/26.



There are more than 50 differently worded date labels in use in the US, leading to consumer confusion and the premature wasting of food that could be eaten safely.

In California alone, nearly 6 million tons of food each year are wasted, also wasting the resources required to grow, process, distribute, and store the food.

Specific changes:

- "BEST if Used by" or "BEST if Used or Frozen by" as quality terminology
- "USE by" or "USE by or Freeze by" as safety terminology
- Consumer-facing "sell by" dates are prohibited.



SB 54 PLASTIC POLLUTION PREVENTION AND PACKAGING PRODUCER RESPONSIBILITY

DETAILS ABOUT SB 54

- Packaging waste comprises 27% of CA landfill waste.
- Taxpayers and local governments spend over \$420 million annually to clean up and prevent litter.
- The law aims to eliminate single-use products and packaging that are not reusable, recyclable, or compostable in California facilities by 2032.
- The recycling rates for all plastic packaging and food-service material must meet the specified rate of 65% by January 1, 2032. Interim targets are 30% by January 1, 2028, and 50% by January 1, 2030.
- Compliance regulations and incentives for in-state manufacturing with recycled materials are being developed by the state with input from industry experts and stakeholders.
- This law is in the rulemaking process and will have an impact mostly on producers; however, the effects of SB 54 will flow down to the general public.



SB 707 RESPONSIBLE TEXTILE RECOVERY ACT OF 2024

DETAILS ABOUT SB 707

- Fast fashion, or the marketing and sale of low-cost, low-quality garments that fall out of vogue with increasing speed, is a key driver of the fashion industry's contribution to carbon emissions.
- This bill establishes the nation's first extended producer responsibility (EPR) requirement for textiles, making apparel and textile producers responsible for creating a plan to collect, repair, and recycle their products.
- The bill applies to apparel and textile articles that are unsuitable for reuse in their current condition and includes footwear, swimwear, undergarments, and handbags, among other products.
 - The bill calls on fashion brands to emphasize reuse and repair programs for branded retail.
 - The bill would require apparel producers to form and join a producer responsibility organization (PRO). The PRO must be implemented by July 1, 2030 at the latest.

FREQUENTLY ASKED QUESTIONS

THE GROCERY STORE SAYS THESE GREEN PRODUCE BAGS ARE COMPOSTABLE, ARE THEY?

Plastic items labeled "biodegradable" or "compostable" cannot be composted in the backyard or placed in curbside carts. Please do not place them into the recycling either, as these compostable plastics are different from regular plastic and have different melting points. They must be placed in the garbage. Compost facilities do not want these bags for two reasons: (1) some bags are marketed as compostable but are still made of petroleum-based plastic and would only break down into microplastics, and (2) compost-containing bags cannot be used for USDA organic agriculture, on which local farmers depend.

WHAT DO I DO WITH OLD VAPES?

Vape pens should be disposed as household hazardous waste. They contain several different hazards including batteries, e-waste, and nicotine (an acute toxin). The HHW facility will accept vape pens from residents only, not businesses.

HOW DOES A DROP-AND-GO CRV STATION WORK?

Sign up for a free account at recycletek.co. Connect your account to a roll of Recycletek Smart EcoSack bags. Bring your containers to one of the Drop + Go CRV Centers. Choose how you want to receive your refund from the options and get funds within 72 hours. Bags can be picked up at Flipside Thrift, 6591 Commerce Blvd, Rohnert Park.

WHY IS PLASTIC GRASS AN ISSUE?

Plastic grass, also known as artificial turf, leaches microplastics and chemicals involved in its production into the soil beneath it and into the groundwater. Using plastic grass in active settings such as soccer fields results in more microplastics being dispersed into the air. There are no recycling options for plastic grass, leading to large amounts in the landfill at the end of life.

I HAVE OLD SOLAR PANELS, WHAT CAN I DO WITH THEM?

The Department of Toxic Substances Control (DTSC) recently developed regulations for managing spent solar panels as Universal Waste, a category of Hazardous Waste. Solar panels that qualify as Universal Waste must be managed as hazardous and cannot be put in the landfill, most local e-waste collection sites, or curbside bins. There is one site locally, eWaste Sonoma, that will currently accept them. Please contact your solar installer or manufacturer for advice regarding expanding the longevity of your existing panels or for recycling opportunities. If your panels are still in working condition with no damage to the panel or cords, consider donating them to Habitat For Humanity Restore or selling them on online donation platforms such as Craigslist, Nextdoor, or Facebook Marketplace.

WHAT DO I DO WITH COOKING OIL?

Remember that pouring fats, oils, and grease (FOG) down sinks can ruin your home's plumbing system and have negative impacts on municipal sewer systems and private septic systems. Don't dump that FOG down your sink! If the amount of oil is too much to be wiped up with a paper towel, but it is less than 2 cups, allow the oil to cool before discarding it into your garbage. Please make sure your garbage with the oil is properly bagged to avoid a mess. However, if you have more than 2 cups of oil, such as from a deep fryer, please transfer to a sturdy container and transport to a select location. The oil will be recycled into biodiesel for use in cars and trucks.

WHAT ARE COMPOST HUBS? CAN I USE THEM?

Compost distribution hubs are a community resource where we provide limited amounts of locally produced compost for residents to use in their home gardens and landscaping. There are locations across the county with varying hours, please see our website for updated information.



YOUR BOWL OF BEANS CAN HELP USE UP OTHER THINGS IN THE KITCHEN

FRUITS, VEGETABLES, HERBS, SPICES, PICKLES, AND OILS CAN ALL ELEVATE YOUR MEAL TO THE NEXT LEVEL. MISCELLANEOUS LEFTOVERS CAN BE REFRESHED WITH THE ADDITION OF BEANS.

- A fresh pico of pomegranate, serrano, red onion, cilantro
- Sour cream and chile crisp
- Kimchi and cheddar cheese
- Fresh herbs and a drizzle of olive oil
- Diced leftover veggies
- Toast or potatoes as a base



DON'T BE INTIMIDATED BY DRIED BEANS!

BEANS ARE A PROTEIN-RICH, EASILY PRESERVED STAPLE IN MUCH OF THE WORLD. BEYOND ACCESSIBILITY AND NUTRITION, LEGUMES ARE KNOWN NITROGEN FIXERS IN SOIL, STRENGTHENING THE BIODIVERSITY IN YOUR GARDEN.

THE RANCHO GORDO STOVETOP MANNER OF COOKING BEANS:

- Check the beans for debris and rinse in several changes of water.
- Sauté aromatic vegetables in olive oil.
- Add the dried beans and enough liquid to cover by about 2 inches.
- Bring the pot to a rapid boil for 10-15 minutes.
- Lower the heat to a gentle simmer until the beans are done, between 1 hour and 3 hours. If the bean-cooking water starts to get low, add hot water.
- Salt when the beans are just starting to soften.

[RANCHOGORDO.COM](https://www.ranchogordo.com)

Reprinted with permission from Rancho Gordo, Inc. © 2025. All rights reserved.



NOT-TOO-SPICY BLACK BEANS

INGREDIENTS

- 1 1/2 cups dry black beans
- 2 tablespoons fat
- 1 onion, chopped
- 4 cloves garlic, minced
- 2 jalapeños or to taste, minced
- 3/4 teaspoon salt or to taste
- Juice of 2 limes or to taste

DIRECTIONS

1. Cook dry beans and reserve the liquid.
2. Sauté the onion, garlic, and jalapeños in oil until tender, about 5 minutes.
3. Add beans with some of their liquid and simmer until most of the liquid has cooked off (about 30 minutes).
4. Add salt and lime.
5. Serve with rice and garnish with cilantro and sour cream or yogurt, if desired.

[ZEROWASTECHEF.COM](https://www.zerowastechef.com)



REVIVE SAD VEGETABLES THROUGH BRAISING

- **Sturdy vegetables last longer.** Cabbage, onions, brussels sprouts, potatoes, eggplant, cauliflower, and others.
- **Cut the larger vegetables into smaller pieces or slices.** Smaller pieces will cook more quickly, but everything will need to be in a single layer on your pan.
- **Use plenty of braising fat.** Olive oil, ghee, butter, and neutral oil all work; use what you have on hand.
- **Use one or more braising liquids.** Water, tomato purée, broth, coconut milk, leftover wine, or a splash of vinegar all impart different flavors.

WHAT TO DO WITH THEM:

- Heat the fat over moderate heat in a large, deep sauté pan. Place the vegetable slices or halves in the pan in a single layer and sprinkle with a pinch of salt. Brown between 5 and 10 minutes (the time depends on the type of vegetable and size). Flip, salt, and brown for up to 5 minutes on the other side.
- Pour in enough liquid to create a shallow pool in the pan. Do not submerge the vegetables. The liquid should reach (at most) a third of the way up the side of the vegetables. Add a sprig or two of fresh herbs, if using. Cover. Turn the heat down to a low simmer.
- Check the vegetables after about 20 minutes. They are ready when fork tender and most of the liquid has cooked off. Cabbage slices and celery need over an hour, onions cook in about 50 minutes, and potatoes should be done in around 20 minutes, for example. (However, the smaller the pieces, the faster they cook.)
- If the vegetables begin to dry out partway through cooking, add a splash of liquid. Remove the lid from the pan and cook off any excess liquid if necessary.

ZEROWASTECHEF.COM



MEDITERRANEAN BEAN SALAD

WHIP UP A LIGHT AND FLAVORFUL HERBAL VINAIGRETTE TO DRESS THE SALAD. MIX UP THE VEGETABLES YOU INCLUDE TO USE WHAT YOU HAVE.



Salad ingredients:

- 1 or 2 types of beans or chickpeas, prepared according to the recipe on page 16
- 1 small onion, diced
- 1 medium cucumber, diced
- 2 large tomatoes, diced, or a handful of cherry tomatoes, cut in half
- celery, diced
- olives, pitted

Vinaigrette ingredients:

- 1/4 c extra virgin olive oil
- 1/4 c vinegar or acid of choice (balsamic/red wine/white wine/fruit vinegar/lemon juice)
- 1 tsp dijon mustard
- salt + pepper to taste
- 1/2 c minced parsley
- 2 tbsp minced dill
- 3 cloves garlic, minced or mashed

Combine the olive oil, vinegar or acid, and mustard and mix until incorporated. Add the other vinaigrette ingredients and combine. Add to the salad ingredients and mix together. Let rest for 1 hour or more in the fridge.

COUNTY REFUSE DISPOSAL SITES

DISPOSAL SITES

ANNAPOLIS TRANSFER STATION

33549 ANNAPOLIS RD, ANNAPOLIS

DISPOSAL AND RECYCLING

W-SA 8A - 4P (707) 886-5204

CENTRAL DISPOSAL SITE

500 MECHAM RD, PETALUMA

DISPOSAL

M-SA 7A - 3P (707) 795-1693

HOUSEHOLD HAZARDOUS WASTE FACILITY

TH-SA 7:30A - 2:30P (707) 795-2025

RECYCLING AND REUSE

M-SA 7A - 3P (707) 795-3660

GUERNEVILLE TRANSFER STATION

13450 POCKET DR, GUERNEVILLE

DISPOSAL AND RECYCLING

M-TU 8A - 4P, TH-SA 8A - 4P (707) 795-1693

HEALDSBURG TRANSFER STATION

166 ALEXANDER VALLEY RD, HEALDSBURG

DISPOSAL AND RECYCLING

M-SA 8A - 4P (707) 795-1693

SONOMA TRANSFER STATION

4376 STAGE GULCH RD, SONOMA

DISPOSAL AND RECYCLING

M-SA 7A - 3P (707) 795-1693

COVER YOUR LOAD. IT'S THE LAW.

LOCAL AND STATE LAWS REQUIRE THAT GARBAGE AND DEBRIS BEING TRANSPORTED BY VEHICLE BE COVERED OR SECURED IN A WAY TO PREVENT DROPPING OR SPILLING ONTO ROADWAYS.

UNCOVERED/UNSECURED LOADS WILL BE CHARGED \$15.00 PER VEHICLE AT COUNTY REFUSE DISPOSAL SITES.

OTHER DROP-OFF

REPUBLIC SERVICES/GLOBAL MATERIALS RECOVERY SERVICES

3899 SANTA ROSA AVE, SANTA ROSA
M-SA 7A - 5P, SU 8A - 4P (707) 585-0511

Global Materials Recovery Services is not part of the County Refuse Disposal Site system and cannot accept refuse/garbage. Fees differ at this location.

WINDSOR MATERIAL RECOVERY & TRANSFER FACILITIES

590 CALETTI AVE, WINDSOR
M-SA 7A - 4:30P (707) 838-2597

Windsor Material Recovery & Transfer Facilities is not part of the County Refuse Disposal Site system and cannot accept refuse/garbage. Fees differ at this location.

FEE SCHEDULE FOR DISPOSAL SITES FEES CHANGE EVERY APRIL

USE OF DISPOSAL SITES IS LIMITED TO WASTE GENERATED BY RESIDENTS AND BUSINESSES IN SONOMA COUNTY. PAYMENT BY CASH, DEBIT, AND CREDIT CARD ONLY. NO CHECKS.

Disposal sites will be closed on Sundays and on the following dates: New Year's Day • 4th of July • Labor Day • Thanksgiving Day • Christmas Day

FEES MAY CHANGE WITHOUT NOTICE



REFUSE/GARBAGE ALL VEHICLES ARE WEIGHED

\$158/TON

MINIMUM \$40
FEE PER VEHICLE



YARD DEBRIS & FOOD SCRAPS ALL VEHICLES ARE WEIGHED

BREAD • COFFEE FILTERS • DAIRY • EGGSHELLS • FRUIT • GRASS • LEAVES • PASTA • RICE • TREE PRUNINGS • VEGETABLES

NOT ACCEPTED Animal/pet waste • Bamboo • BBQ ashes (wood fireplace ashes okay) • Cactus • Cooking oil and liquid waste • Dirt, rocks, or sod • Glass • Manure • Palm fronds • Pampas grass • Plastics including those labeled biodegradable or compostable • Poison oak • Sudden Oak Death infested material • Tree stumps over 18" in diameter or more than 4 feet in length

\$112/TON

MINIMUM \$40
FEE PER VEHICLE



WOOD SCRAP ALL VEHICLES ARE WEIGHED

CLEAN DIMENSIONAL LUMBER • OSB (ORIENTED STRAND BOARD) • PALLETS • PLYWOOD • WOOD CHIPS • WOOD SIDING

NOT ACCEPTED Painted wood • Particleboard • Pressure-treated wood • Railroad ties • Sawdust • Stained wood

\$112/TON

MINIMUM \$40
FEE PER VEHICLE



APPLIANCES REMOVE FOOD ITEMS

WITH FREON • AIR CONDITIONERS • DEHUMIDIFIERS • FREEZERS • REFRIGERATORS • WATER COOLERS

\$58 EACH
WITH FREON

NON-FREON • DRYERS • FURNACES • OIL-FILLED RADIATORS • OVENS • STOVE TOPS • STOVES • TRASH COMPACTORS • WASHERS • WATER HEATERS • WATER SOFTENERS

\$27 EACH
NON-FREON



ELECTRONICS (E-WASTE)

CELL PHONES • COMPUTERS • CORDS • GAME CONSOLES • LAPTOPS • MICROWAVES • MONITORS • OFFICE EQUIPMENT • PRINTERS • STEREOs • TABLETS • TVS

NOT ACCEPTED Appliances • Batteries • Fluorescent lamps

For a complete list, visit zerowastesonoma.gov/e-waste-disposal

NO FEE



MATTRESSES

MATTRESS OR BOX SPRING, ALL SIZES. CRIB-SIZE MATTRESS IS REFUSE/GARBAGE

\$55 EACH



TIRES Up to 9 tires maximum per load

PASSENGER VEHICLE/PICKUP TRUCK TIRES ONLY

NOT ACCEPTED Large tires, tires with rims, or rubber equipment tracks

\$20 EACH
WITHOUT RIMS



SMALL MOTOR ITEMS

CHAINSAWS • ENGINES • SMALL MOTORS • TRANSMISSIONS • WEED WHACKERS

NOT ACCEPTED Remove batteries and fluids from motors and dispose of properly. **SEE HOUSEHOLD HAZARDOUS WASTE PAGE 4**

\$26 EACH



BOATS AND CAB-OVER CAMPERS

Drop-off before 10A

NOT ACCEPTED Remove appliances and engines

\$220 EACH



PRESSURE-TREATED WOOD

PRESSURE TREATED • RAILROAD TIES • TELEPHONE POLES (LESS THAN 6 FEET)

\$215/TON

MATERIALS ACCEPTED ALL SITES LISTED BELOW ARE OPERATED BY REPUBLIC SERVICES

HOW TO READ THE CHART:

D DROP-OFF, FREE

F FEE
Fees charged by private facilities will differ from fees charged at County Refuse Disposal Sites.

ANNAPOLIS
TRANSFER
STATION

CENTRAL
DISPOSAL
SITE

GUERNEVILLE
TRANSFER
STATION

HEALDSBURG
TRANSFER
STATION

SONOMA
TRANSFER
STATION

GLOBAL
MATERIAL
RECOVERY
SERVICES

WINDSOR
MATERIAL
RECOVERY
SERVICES



APPLIANCES

F

F

F

F

F

F

F



BATTERIES LEAD-ACID

D

D

D

D

D

F

F



BOATS AND CAB-OVER
CAMPERSDROP-OFF BEFORE 10A

F



ELECTRONICS (E-WASTE)

D

D

D

D

D



HOUSEHOLD HAZARDOUS
WASTE (HHW)

D

SEE HOUSEHOLD HAZARDOUS WASTE PAGE 4



MATTRESSES

F

F

D

F

F

F

F

SEE MATTRESSES PAGE 28, OR RECYCLING EVENTS PAGE 21



MOTOR OIL AND FILTERS

D

D
DROP-OFF AT
HHW FACILITY

D

D

SEE MOTOR OIL AND FILTERS PAGE 22-23



PORCELAIN REMOVE METAL
HARDWARE AND SEATS

D

SEE CASHIER

D

SEE CASHIER

D

SEE CASHIER

F

SEE CASHIER

F



PRESSURE-TREATED
WOOD

F

F

F

F

F

F



RECYCLING (CANS, GLASS,
PAPER, PLASTIC, AND SCRAP METALS)
SOME RESTRICTIONS MAY APPLY,
CHECK WITH ON-SITE ATTENDANT

D

D

D

D

D

D

F

SEE DROP-OFF RECYCLING PAGE 20



REFUSE/GARBAGE

F

F

F

F

F



SMALL MOTOR ITEMS
REMOVE FLUIDS FROM MOTORS

F

F

F

F

F

F

F



TIRES

F

F

F

F

F

F

F



WOOD SCRAP

F

F

F

F

F

F



YARD DEBRIS & FOOD
SCRAPS

F

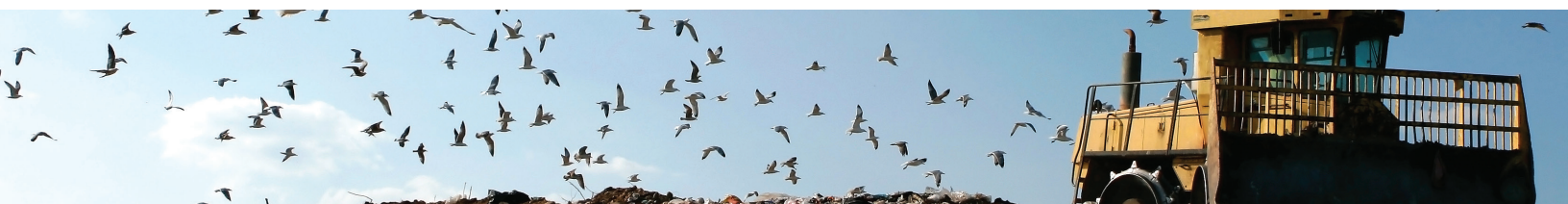
F

F

F

F

F



FREE E-WASTE AND MATTRESS RECYCLING EVENTS 2026

Zero Waste Sonoma has partnered with Conservation Corps North Bay and the Mattress Recycling Council to host free electronics and mattress collection events. No appointment is necessary for these events. All events will be held in the parking lot.



JANUARY 9-11

SANTA ROSA 9A-5P

LUTHER BURBANK CENTER
50 MARK WEST SPRINGS RD

JANUARY 24-25 ★

OAKMONT 9A-5P

COMMUNITY CENTER
6637 OAKMONT DR

FEBRUARY 20-22

CLOVERDALE 9A-5P

CITRUS FAIRGROUNDS
1 CITRUS FAIR DR

MARCH 13-15

GRATON 9A-5P

FIRE STATION
3750 GRAVENSTEIN HWY N

APRIL 10-12

SONOMA 9A-5P

COMMUNITY CENTER
276 E NAPA ST

APRIL 25-26 ★

MONTE RIO 9A-5P

COMMUNITY CENTER
20488 CA-116

MAY 22-24

HEALDSBURG 9A-5P

COMMUNITY CENTER
1557 HEALDSBURG AVE



JUNE 12-14

JUNE 13

SANTA ROSA 9A-5P

LUTHER BURBANK CENTER
50 MARK WEST SPRINGS RD

JULY 17-19

JULY 18

PETALUMA 9A-5P

LUCCHESI PARK
320 N MCDOWELL BLVD

AUGUST 15-16 ★

AUGUST 15

OAKMONT 9A-5P

COMMUNITY CENTER
6637 OAKMONT DR

SEPTEMBER 18-20

ROHNERT PARK 9A-5P

COMMUNITY CENTER
5401 SNYDER LN

OCTOBER 2-4

OCTOBER 3

WINDSOR 9A-5P

HUERTA GYMNASIUM
9291 OLD REDWOOD HWY

OCTOBER 16-18

OCTOBER 17

CLOVERDALE 9A-5P

TRAIN DEPOT
501 ASTI RD

NOVEMBER 20-22

SANTA ROSA 9A-5P

FINLEY PARK
2060 W COLLEGE AVE

DECEMBER 11-13

PETALUMA 9A-5P

LUCCHESI PARK
320 N MCDOWELL BLVD



E-WASTE RECYCLING EVENTS **FRIDAY-SUNDAY** ★

ACCEPTED: CELL PHONES • COMPUTERS • CORDS • GAME CONSOLES • LAPTOPS • MICROWAVES WORKING AND NONWORKING TVS • OFFICE EQUIPMENT • PRINTERS • STEREOS • TABLETS

NOT ACCEPTED: APPLIANCES • BATTERIES • LIGHT BULBS/ FLUORESCENT LAMPS

★ OAKMONT AND MONTE RIO EVENTS HELD SATURDAY-SUNDAY



MATTRESS RECYCLING EVENTS **SATURDAY ONLY**

ACCEPTED: CLEAN, DRY MATTRESSES (ANY SIZE) • BOX SPRINGS • FUTONS

LIMIT OF THREE UNITS PER VEHICLE PER DAY

NOT ACCEPTED: SOILED OR WET MATTRESSES • BED FRAMES • CRIB MATTRESSES • DOG BEDS • MATTRESS TOPPERS

EVENTS SUBJECT TO CHANGE



**CONSERVATION
CORPS NORTH BAY**

A path to a better future.



bye bye mattress®
A Program of the Mattress Recycling Council®

LEARN MORE: [ZEROWASTESONOMA.GOV](https://zerowastesonoma.gov)
(707) 565-3375

INFORMATION SUBJECT TO CHANGE

ZERO WASTE GUIDE



21

USED MOTOR OIL AND FILTER RECYCLING

ARE YOU A DO-IT YOURSELF? RECYCLE YOUR MOTOR OIL AND FILTER TOO!

HOW TO USE OIL COLLECTION SITES



DID YOU KNOW THAT USED MOTOR OIL NEVER WEARS OUT? IT JUST GETS DIRTY AND CAN BE RECYCLED, CLEANED, AND USED AGAIN. Place your motor oil in a drain pan or sealed see-through reusable container you take back with you. Some sites offer a 40¢ per gallon rebate for used motor oil.

ONLY BRING OIL AND FILTERS TO RECYCLE DURING REGULAR BUSINESS HOURS. DO NOT LEAVE OUTSIDE THE STORE. ABANDONING OIL OR ANY OTHER HAZARDOUS SUBSTANCE IN ANY QUANTITY AFTER HOURS IS ILLEGAL AND PUNISHABLE BY IMPRISONMENT OR A FINE UP TO \$10,000. ABANDONED OIL CONTAMINATES OUR ENVIRONMENT AND POISONS LOCAL WATERWAYS. DISPOSE OF OIL AND FILTERS SAFELY AND RESPONSIBLY.

- Sites typically accept no more than 5 gallons of used motor oil and 2 filters at one time.
- 1 or 2 oil filters are usually accepted for free; some locations charge up to \$3.

ABOUT CONTAMINATED OIL

Sites will not accept used motor oil that has been contaminated with other fluids such as antifreeze, solvents, gasoline, or water. Even a small amount of contamination causes the entire tank of motor oil collected to become non-recyclable. For proper disposal of contaminated motor oil, [SEE HOUSEHOLD HAZARDOUS WASTE PAGE 4](#)



		ANTIFREEZE	MOTOR OIL	OIL FILTERS
ANNAPOLIS				
ANNAPOLIS TRANSFER STATION (RECYCLING) 33549 ANNAPOLIS RD (707) 886-5204	W-SA 8A-4P	•	•	
BODEGA BAY				
SPUD POINT MARINA 1818 WESTSHORE RD (707) 875-3535	M-F 8A-4P	•	•	•
CLOVERDALE				
O'REILLY AUTO PARTS 1105 S CLOVERDALE BLVD (707) 894-9652	M-SA 7:30A-8P, SU 8A-8P		•	•
GEYSERVILLE				
LAKE SONOMA MARINA STORE 4200 STEWARTS POINT/ SKAGGS SPRINGS RD (707) 433-2200 <i>Seasonal April to October</i>	DAILY 9A-5P		•	•
GUERNEVILLE				
GUERNEVILLE TRANSFER STATION (RECYCLING) 13450 POCKET RD/ HWY 116 (707) 795-1693	M-TU 8A-4P, TH-SA 8A-4P		•	•
HEALDSBURG				
HEALDSBURG TRANSFER STATION (RECYCLING) 166 ALEXANDER VALLEY RD (707) 795-1693 <i>Call first</i>	M-SA 8A-4P		•	•
O'REILLY AUTO PARTS 515 HEALDSBURG AVE (707) 431-7380	M-SA 7:30A-8P, SU 8A-8P		•	•
LARKFIELD				
BIG BRAND TIRE & BRAKE 250 AIRPORT BLVD (707) 528-8595	M-F 8A-5:30P, SA 8A-2P	•	•	•
PETALUMA				
AUTO ZONE 101 E WASHINGTON ST (707) 773-1103	M-SA 7:30A-9P, SU 8A-8P		•	•
CITY CORPORATION YARD 840 HOPPER ST (707) 778-4395	M-SA 8A-4:30P		•	•

		ANTIFREEZE	MOTOR OIL	OIL FILTERS
PETALUMA, CONTINUED				
DAVE'S AUTO REPAIR 1911 BODEGA AVE (707) 763-8365	M-F 8A-5P	•	•	
THE GARAGE 2004 BODEGA AVE (707) 762-0272	M-F 8A-5P		•	•
HENRY CURTIS FORD-MERCURY SERVICE DEPARTMENT 1120 AUTO CENTER DR (707) 769-2310	M-F 8:00A-5:30P	•	•	•
HOUSEHOLD HAZARDOUS WASTE FACILITY 500 MECHAM RD (707) 795-2025	TH-SA 7:30A-2:30P	•	•	•
OILSTOP DRIVE THRU OIL CHANGE 601 E WASHINGTON ST (707) 765-9675	M-SA 8A-6P		•	•
OILSTOP DRIVE THRU OIL CHANGE 1004 LAKEVILLE HWY (707) 766-0272	M-SA 8A-6P		•	•
O'REILLY AUTO PARTS 361 E WASHINGTON ST (707) 763-7204	M-SA 7:30A-9P, SU 8A-8P		•	•
ROHNERT PARK				
ACUR-IT AUTOMOTIVE REPAIR 5677 REDWOOD DR, STE A/B/C (707) 584-1424	M-F 7:30A-5P	•	•	•
AUTO ZONE 6595 COMMERCE BLVD (707) 206-9807	M-SA 7:30A-9P, SU 8A-8P		•	•
OILSTOP DRIVE THRU OIL CHANGE 5070 REDWOOD DR, STE 1 (707) 588-8008	DAILY 8A-6P		•	•
OILSTOP DRIVE THRU OIL CHANGE 6111 REDWOOD DR (707) 586-4150	M-SA 8A-6P		•	•
O'REILLY AUTO PARTS 590 RALEY'S TOWN CENTRE (707) 585-3613	M-SA 7:30A-8P, SU 8A-8P		•	•

		ANTIFREEZE	MOTOR OIL	OIL FILTERS
SANTA ROSA				
AUTO ZONE 1820 GUERNEVILLE RD (707) 542-4037	M-SA 7:30A-9P, SU 8A-8P	•	•	
AUTO ZONE 2510 SANTA ROSA AVE (707) 544-1097	M-SA 7:30A-9P, SU 8A-8P	•	•	
AUTO ZONE 1991 SEBASTOPOL RD (707) 527-0427	DAILY 7:30A-9P	•	•	
FREEMAN LEXUS SERVICE DEPARTMENT 2845 CORBY AVE (707) 545-9255	M-SA 7A-5P	•	•	
FREEMAN TOYOTA PARTS DEPARTMENT 2875 CORBY AVE (707) 542-1791	M-SA 7A-5:30P	•	•	
HAHN AUTOMOTIVE 940 N DUTTON AVE (707) 544-5080	M-F 8A-5P	•	•	
OILSTOP DRIVE THRU OIL CHANGE 2190 CLEVELAND AVE (707) 579-4479	M-SA 8A-6P	•	•	
OILSTOP DRIVE THRU OIL CHANGE 1375 SANTA ROSA AVE (707) 528-1000	M-SA 8A-6P	•	•	
O'REILLY AUTO PARTS 1543 FARMERS LN (707) 526-5724	DAILY 7:30A-8P	•	•	
O'REILLY AUTO PARTS 1910 MENDOCINO AVE (707) 545-4730	M-SA 7:30A-8P SU 8A-8P	•	•	

		ANTIFREEZE	MOTOR OIL	OIL FILTERS
SANTA ROSA, CONTINUED				
VALLEY FAST LUBE & OIL 1675 PINER RD (707) 544-2423	M-F 7A-5:30P, SA 7A-3P		•	
SEBASTOPOL				
J&W FOREIGN AUTO SERVICE 401 S MAIN ST (707) 823-9797	M-F 9A-5P	•	•	
O'REILLY AUTO PARTS 724 GRAVENSTEIN HWY N (707) 829-0650	DAILY 8A-8P	•	•	
PETE'S AUTOMOTIVE 6160 SEBASTOPOL RD (707) 823-6020	M-F 8:30A-5:30P	•	•	•
SONOMA				
OIL CHANGERS 19295 SONOMA HWY (707) 939-1680	M-F 8A-7P, SA 8A-6P, SU 9A-5P	•	•	
O'REILLY AUTO PARTS 289 W NAPA ST (707) 938-5093	M-SA 7:30A-9P, SU 8A-8P	•	•	
SONOMA 76 195 W NAPA ST (707) 996-3555	M-F 8A-4:30P	•	•	
WINDSOR				
O'REILLY AUTO PARTS 6500 HEMBREE LN, STE 225 (707) 838-2217	M-SA 7:30A-9P, SU 8A-8P	•	•	
WALMART TIRE & LUBE XPRESS 6650 HEMBREE LN (707) 836-7400	DAILY 7A-7P	•	•	

CURBSIDE MOTOR OIL AND FILTER RECYCLING



CALL YOUR HAULER FOR DETAILS

SEE CURBSIDE SERVICES PAGE 8

RECOLOGY SONOMA MARIN (800) 243-0291

Recology.com/SonomaMarin

CLOVERDALE

COTATI

HEALDSBURG

PETALUMA

ROHNERT PARK

SANTA ROSA

UNINCORPORATED AREA



SONOMA COUNTY RESOURCE RECOVERY (707) 795-7470

SonomaCORR.com

SEBASTOPOL

WINDSOR

SONOMA GARBAGE COLLECTORS (707) 996-7555

SonomaGarbage.com

SONOMA INCLUDING CHANTARELLE,
CREEKSIDE, TEMEC



RECYCLING IS THE ONLY LEGAL WAY TO DISPOSE OF MOTOR OIL AND FILTERS



CONSTRUCTION AND DECONSTRUCTION

DROP-OFF FOR MIXED LOADS OF CONSTRUCTION AND DEMOLITION DEBRIS

The following companies sort and recycle mixed loads of construction and demolition debris, including asphalt, cardboard, carpet, ceramic toilets and sinks, concrete, lumber end-cuts, scrap metal, sheetrock, wood, and yard debris.

PETALUMA

CENTRAL DISPOSAL SITE

500 MECHAM RD
(707) 795-1693
M-SA 7A-3P
Drop-off and fee: call for pricing.

WINDSOR

WINDSOR MATERIAL RECOVERY FACILITY

590 CALETTI AVE
(707) 838-2597
M-SA 7A-4:30P
Drop-off and fee: call for pricing.

DROP-OFF REUSABLE BUILDING MATERIALS

PETALUMA

CENTRAL DISPOSAL SITE (REUSE AREA)

500 MECHAM RD
(707) 795-3660 M-SA 7A-3P
Drop-off: good usable bathroom fixtures, cabinets, doors, fences (cyclone fencing), hardware, ironwork, lighting, high quality new/used lumber, marble/tile, and windows.

HERITAGE SALVAGE

PETALUMA

1473 PETALUMA BLVD S
(707) 762-6277
TU-F 9A-5P, SA 10A-4P
Drop-off and pickup: good condition for resale; call first.

SANTA ROSA

BATAEFF SALVAGE COMPANY

250 MOUNTAIN VIEW AVE
(707) 584-8401
M-SA 7:30A-5:30P
Buyback, drop-off, and pickup: removal and purchase of materials including hardware, tools, aluminum, steel, and industrial machinery.

GREENLYNX

3403 SANTA ROSA AVE
(707) 757-5685
TH/F 10A-5P, SA 10A-4P
Drop-off (prior approval needed; call first): lumber and landscaping, cabinets, doors, and windows, fee for service pickup.



HABITAT FOR HUMANITY RESTORE

1201 PINER RD, STE 500
(707) 568-3228
M-F 10A-6P, SA 9A-5P
Drop-off and pickup: new, surplus and salvaged building materials; call first. Charitable receipts issued for donations.

SANTA ROSA TOOL LIBRARY

642 5TH ST
(707) 229-3949
W 5P-7P, SA 9A-2P
Drop-off: hand and power tools in working condition ready to use; call first. No gas or pneumatic powered tools.

WEST COAST METALS, INC.

3615 COPPERHILL LN
(707) 838-9731
M-F 7A-3:30P, SA 7A-2:30P
Drop-off: metal building parts.

DECONSTRUCTION SERVICES

Deconstruction is the careful disassembly of buildings to reclaim components for reuse and recycling.

CVE NORTHERN CALIFORNIA

(707) 584-1900
M-F 8A-5P
Pickup and fee: specializes in residential/commercial deconstruction and salvage. Charitable receipts issued for donations.

GREENLYNX

(707) 787-5969
TH/F 10A-5P, SA 10A-4P
Pickup and fee: specializes in residential/commercial deconstruction and reclaim.

CONSTRUCTION DEBRIS BOX ROLL-OFF CONTAINER PROVIDERS

Construction and demolition debris (C&D) is any used or discarded material resulting from construction, remodeling, repair, or demolition. You may contract with debris box haulers for C&D only. Keep in mind that you are required to use the franchised residential garbage hauling company for your area for collection of garbage and for permanent debris boxes. To locate the franchised residential hauling company for your area, [SEE CURBSIDE SERVICES PAGE 8](#)



LOCAL ORDINANCES COMING SOON: CONSTRUCTION & DEMOLITION

About 30% of our local landfill waste stream is comprised of material from construction sites, most of which can be recycled or salvaged in some way. The ZWS board passed the Building Project Materials Management, Deconstruction, Reuse and Recycling Requirements model ordinance in 2023, and in the near future, Sonoma County jurisdictions will consider adopting it into municipal code to require all projects to separate and recover all asphalt, concrete, plant, and tree debris. It will also require that buildings constructed 100 years ago or earlier, or are designated as historic, must be carefully deconstructed as opposed to demolished mechanically, to salvage as much material as possible. Keeping building materials in circulation for secondary use and in new construction jobs is an important step in reducing the embodied carbon associated with the built environment, developing affordable and sustainable housing, preserving historical and cultural structures, expanding the local reuse economy through job creation, and extending the life of our landfill.



Household batteries are accepted for curbside pickup in every jurisdiction.

SEE CURBSIDE SERVICES PAGE 8

SEE HOUSEHOLD HAZARDOUS WASTE PAGE 4

The following locations accept alkaline and rechargeable batteries from residents.

BOYES HOT SPRINGS

PARSONS LUMBER & HARDWARE
17800 SONOMA HWY
(707) 996-1008
M-SA 7A-5:30P, SU 8A-5P

CLOVERDALE

CLOVERDALE CITY HALL
124 N CLOVERDALE BLVD
(707) 894-2521
M-TH 8A-5P
Drop-off: Cloverdale residents only.

COTATI

COTATI POLICE DEPARTMENT
203 W SIERRA AVE
(707) 792-4611 24-HOUR
Drop-off: Cotati residents only.

LOWE'S
7921 REDWOOD DR
(707) 242-5000
M-SA 6A-10P, SU 7A-8P

HEALDSBURG

COMMUNITY DEVELOPMENT
401 GROVE ST
(707) 431-3346
M-TH 7:30A-5P, F 8A-5P
(closed every other Friday)
Drop-off: Healdsburg residents only.

HEALDSBURG COMMUNITY CENTER
1557 HEALDSBURG AVE
(707) 431-3301
M-TH 8:30A-5:30P, F 9A-5P
Drop-off: Healdsburg residents only.

HEALDSBURG FIRE DEPARTMENT
601 HEALDSBURG AVE
(707) 431-3360 M-F 8A-5P
Drop-off: Healdsburg residents only.

HEALDSBURG LUMBER COMPANY
359 HUDSON ST
(707) 431-9663
M-F 6:30A-5P, SA 7A-3P

HEALDSBURG POLICE DEPT

238 CENTER ST
(707) 431-3377 DAILY
7:30A-7P
Drop-off: Healdsburg residents only.

HEALDSBURG SENIOR CENTER
133 MATHESON ST
(707) 431-3324 M-F 9A-5P
Drop-off: Healdsburg residents only.

PETALUMA

BATTERIES PLUS
313 N MCDOWELL BLVD
(707) 794-2244
M-F 8A-7P, SA 8A-6P, SU 10A-5P
Drop-off and fee: alkaline batteries. Drop-off (no cost): rechargeable batteries.

HOUSEHOLD HAZARDOUS WASTE FACILITY
500 MECHAM RD
(707) 795-2025
TH-SA 7:30A-2:30P
Drop-off.

TARGET
401 KENILWORTH DR
(707) 775-6322
M-SU 8A-11P

ROHNERT PARK

The following locations accept batteries from Rohnert Park residents only.

CITY HALL
130 AVRAM AVE
(707) 588-2227 M-F 8A-5P

CODDING RECREATION CENTER (SENIOR CENTER)
6800 HUNTER DR, STE A
(707) 585-6780 M-F 9A-4P

COMMUNITY CENTER
5401 SNYDER LN
(707) 588-3456 M-F 8A-5P

PUBLIC SAFETY BUILDING
500 CITY CENTER DR
(707) 584-2600 M-F 8A-5P

PUBLIC WORKS
600 ENTERPRISE DR
(707) 588-3300 M-F 8A-5P

SPORTS CENTER
5405 SNYDER LN
(707) 588-3488
M-F 6A-9P, SA-SU 8A-7P

SANTA ROSA

INTERSTATE ALL BATTERY CENTER OF SANTA ROSA
3315 INDUSTRIAL DR
(707) 546-9907
M-F 8A-5P
Drop-off: only accepting lead acid batteries, no lithium.

TARGET
950 CODDINGTON CENTER
(707) 596-5587
DAILY 7A-11P

1980 SANTA ROSA AVE
(707) 575-0665
DAILY 8A-11P

SEBASTOPOL

FIRE DEPARTMENT
7425 BODEGA AVE
(707) 823-8061
M-TH 7A-5:30P, LUNCH BREAK 12-12:30P

SEBASTOPOL HARDWARE CENTER
660 GRAVENSTEIN HWY N
(707) 823-7688
M-SA 7:30A-7P, SU 8A-6P

SEBASTOPOL REGIONAL LIBRARY
7140 BODEGA AVE
(707) 823-7691
M, TH, F, SA 10A-6P
T-W 10A-8P
SU 1P-5P
Drop-off: Sebastopol residents only.



WHAT'S ACCEPTED

ACCEPTED: ALKALINE BATTERIES AAA • AA • C and D-cell • 9-volt • Button batteries
RECHARGEABLE BATTERIES Lithium Ion (Li-Ion) • Nickel Cadmium (Ni-Cd)
• Nickel Metal Hydride (Ni-MH) • Nickel Zinc (Ni-Zn) • Small Sealed Lead (SSLA/Pb)

NOT ACCEPTED: E-bike batteries • Wet cell Ni-Cd • Wet cell lead acid • Vehicle batteries

TAKE-BACK FOR RECHARGEABLE BATTERIES

By law, retailers selling rechargeable batteries are required to take back used rechargeable batteries weighing 11 pounds or less from their customers.

HOW TO PREPARE

To prevent fires, locations listed above require taping the terminals of **all rechargeable batteries and alkaline batteries 9-volt or larger.**

TAPE YOUR BATTERIES WITH HEAVY-DUTY CLEAR TAPE



SEE HOUSEHOLD HAZARDOUS WASTE PAGE 4



WHAT SHOULD I DO WITH



MORE ANSWERS AT zerowastesonoma.gov

PAINT



PAINTCARE DROP-OFF LOCATIONS

When visiting the retailers listed below, drop off a maximum of 5 gallons per customer per day (some sites accept more). Drop off paint only during business hours. Call before you go to determine store limits. For more information, visit www.PaintCare.org

CLOVERDALE

CLOVERDALE ACE HARDWARE

750 S CLOVERDALE BLVD
(707) 894-2165
M-F 7:30A-7P, SA-SU 8A-6P

COTATI

DUNN-EDWARDS

407 AARON ST
(707) 664-1668
M-F 6:30A-5P, SA 8A-1P

HEALDSBURG

GARRETT ACE HARDWARE

1340 HEALDSBURG AVE
(707) 433-5593
M-SA 7A-7P, SU 8A-6P

PETALUMA

HOUSEHOLD HAZARDOUS WASTE FACILITY

500 MECHAM RD
(707) 795-2025
TH-SA 7:30A-2:30P

PETERSON'S PAINT & DECORATING

800 LINDBERG LN, STE 100
(707) 763-1901
M-F 6:30A-5:30P,
SA 8:30A-5P, SU 10A-3P

SHERWIN-WILLIAMS

905 E WASHINGTON ST,
STE 105
(707) 789-9996
M-F 6A-6P, SA 8A-5P,
SU 10A-4P

ROHNERT PARK

SHERWIN-WILLIAMS

5673 REDWOOD DR
(707) 584-7120
M-F 6A-6P, SA 8A-5P,
SU 10A-4P

SANTA ROSA

SHERWIN-WILLIAMS

3310 AIRWAY DR
(707) 575-7776
M-F 6A-6P, SA 8A-5P,
SU 10A-4P

SHERWIN-WILLIAMS

1350 FARMERS LN
(707) 528-0013
M-F 6A-6P, SA 8A-5P,
SU 10A-4P

SEBASTOPOL

SEBASTOPOL HARDWARE CENTER

660 GRAVENSTEIN HWY N
(707) 823-7688
M-SA 7:30A-7P, SU 8A-6P

WINDSOR

GARRETT ACE HARDWARE

10540 OLD REDWOOD HWY
(707) 433-6590
M-SA 7A-6P, SU 8A-6P



LARGE VOLUME PICKUP SERVICE

Large Volume Pickup Service is available at no cost for pickup of at least 100 gallons of paint measured by container size, not by volume. Learn more or request a pickup:

PAINTCARE LARGE VOLUME PICKUP SERVICE

Paintcare.org/large-volume-pickups

(855) 724-6809

WHAT'S ACCEPTED

ACCEPTED: Clear finishes (e.g., varnishes, shellac) • Containers 5 gallons or less in size • Deck and concrete sealers • House paint and primers (latex or oil-based) • Original containers with labels that can be read • Sealed containers • Stains

NOT ACCEPTED: Containers over 5 gallons • Empty containers (dried latex paint okay) • Leaking or open containers

SEE HHW COLLECTION EVENTS FOR MORE DISPOSAL OPTIONS PAGE 4

FREE PAINT PICKUP

REUSE LOCKER AT CENTRAL DISPOSAL SITE



Paint products collected through the Household Hazardous Waste Facility are made available on a first-come-first-served basis to the public for reuse.

Two choices for free paint:

- Remixed paint collected from Zero Waste Sonoma's Household Hazardous Waste Program is available in 5-gallon buckets in four standard colors. Call to request.

OFF-WHITE	SAND	LIGHT GREEN	LIGHT GRAY



- New paint and stain products in original containers.

Location for pick up:

HOUSEHOLD HAZARDOUS WASTE FACILITY

500 MECHAM RD, PETALUMA
(707) 795-2025 TH, F, SA 7:30A-2:30P

Go to the storage units in the lower reuse area or call in advance to see what colors are available.

SEE HOUSEHOLD HAZARDOUS WASTE PAGE 4



E-waste is accepted for free from residents at all County Refuse Disposal Sites.

SEE CURBSIDE SERVICES PAGE 8

SEE COUNTY REFUSE DISPOSAL SITES PAGE 18

The following locations accept working/nonworking equipment.

ANNAPOLIS

ANNAPOLIS TRANSFER STATION
33549 ANNAPOLIS RD
(707) 886-5204
W-SA 8A-4P
Drop-off.

GUERNEVILLE

GUERNEVILLE TRANSFER STATION
13450 POCKET CANYON DR/HWY 116
(707) 795-1693
M-TU 8A-4P, TH-SA 8A-4P
Drop-off.

PLEASE REMOVE BATTERIES FROM DEVICES PRIOR TO RECYCLING

SEE BATTERIES, HOUSEHOLD PAGE 25

HEALDSBURG

GOODWILL
513 HEALDSBURG AVE
(707) 431-8408
W-SU 10A-6P
Drop-off (see GIRE.org for list of items): no TVs, copiers, fax machines, printers, or radiator heaters.

HEALDSBURG TRANSFER STATION
166 ALEXANDER VALLEY RD
(707) 795-1693
M-SA 8A-4P Drop-off.

PETALUMA

CENTRAL DISPOSAL SITE
500 MECHAM RD
(707) 795-2025 TH-SA 7:30A-2:30P Drop-off.

GOODWILL
1000 LAKEVILLE ST
(707) 778-7485
DAILY 10A-6P
141 N MCDOWELL BLVD
(707) 347-5155
W-SU 10A-6P
Drop-off (see GIRE.org for list of items): no TVs, copiers, fax machines, printers, or radiator heaters.

STAPLES
207 S MCDOWELL BLVD
(707) 762-3131
M-F 8A-9P, SA 9A-9P, SU 10A-6P
Drop-off: small office related items, no appliances or TVs.

ROHNERT PARK

GOODWILL
476 ROHNERT PARK EXPRESSWAY
(707) 978-5102
W-SU 10A-6P
Drop-off (see GIRE.org for list of items): no TVs, copiers, fax machines, printers, or radiator heaters.

OFFICE DEPOT
321 ROHNERT PARK EXPRESSWAY
(707) 584-5511
M-F 9A-8P, SA 9A-7P, SU 10A-6P
Drop-off and fee: e-waste must fit in box 18" x 18" x 22"; call first.

E-WASTE REQUIRES SPECIAL DISPOSAL

Electronic waste (e-waste) is a category of hazardous waste and must be disposed in accordance with State and Federal laws. Common examples include: Cell phones • Computers • Cords • Game consoles • Laptops • Office equipment • Printers • Stereos • Tablets • TVs

Many components of e-waste, including metals, glass, and some plastics, can be recycled while other components like lead need to be separated to protect the environment.

SANTA ROSA

BEST BUY
www.bestbuy.com/recycle
1950 SANTA ROSA AVE
(707) 545-1078
DAILY 10A-8P
Drop-off (limit three items per household per day): visit website for a complete list of items accepted.

EWASTE SONOMA
3227 SANTA ROSA AVE, UNIT A
(707) 755-0371
M-F 9A-4P, SA 9A-1P
Drop-off and pickup.
Business-only pickup service.
Also accepting solar panels.

GOODWILL
3535 INDUSTRIAL DR
(707) 545-2492
DAILY 10A-6P
2007 SEBASTOPOL DR
(707) 570-2392
DAILY 10A-6P
1300 FOURTH ST
(707) 527-7922
W-SU 10A-6P
Drop-off (see GIRE.org for list of items): no TVs, copiers, fax machines, printers, or radiator heaters.

REDWOOD GOSPEL MISSION
1821 PINER RD
(707) 578-1830
M-SA 8A-5P
Drop-off and pickup.

STAPLES
2222 CLEVELAND AVE
(707) 523-2080
M-F 8A-9P, SA 9A-9P, SU 10A-6P
Drop-off: small office related items, no appliances or TVs.

CONSERVATION CORPS NORTH BAY
3555 AIRWAY DR
(707) 303-3069
M-TH, SA 7:30A-3P

SEBASTOPOL

GOODWILL
6826 SEBASTOPOL AVE
(707) 823-3551
W-SU 10A-6P
Drop-off (see GIRE.org for list of items): no TVs, copiers, fax machines, printers, or radiator heaters.

SONOMA

SONOMA TRANSFER STATION
4376 STAGE GULCH RD
(707) 795-1693
M-SA 7A-3P Drop-off.

STAPLES
977 W NAPA ST
(707) 935-1466
M-F 8A-9P, SA 9A-9P, SU 10A-6P
Drop-off: small office-related items, no appliances or TVs.

WINDSOR

GOODWILL
6450 HEMBREE LN
(707) 836-1583
DAILY 10A-6P
Drop-off (see GIRE.org for list of items): no TVs, copiers, fax machines, printers, or radiator heaters.

FREE E-WASTE RECYCLING EVENTS

IN PARTNERSHIP WITH THE CONSERVATION CORPS NORTH BAY, E-WASTE COLLECTION EVENTS ARE HELD MONTHLY
SEE PAGE 21





FLUORESCENT LAMPS

Types of lamps:

COMPACT
FLUORESCENT LAMPS
(CFLS)
OR CORKSCREW-TYPE
BULBS

LINEARS SUCH AS
2-FOOT AND 4-FOOT

U-TUBES AND CIRCLINE

All kinds of fluorescent
lamps are accepted
at the Household
Hazardous Waste
Facility.

SEE HOUSEHOLD
HAZARDOUS WASTE
PAGE 4



COTATI

LOWE'S
7921 REDWOOD DR
(707) 242-5000
M-S 6A-10P, SU 7A-8P
Drop-off: CFLs only; store cus-
tomers only, limit 6 per day.

PETALUMA

BATTERIES PLUS
313 N MCDOWELL BLVD
(707) 794-2244
M-F 8A-7P, SA 8A-6P, SU
10A-5P Drop-off and fee:
CFLs, 4-foot, and U-tubes.

**HOUSEHOLD HAZARDOUS
WASTE FACILITY**
500 MECHAM RD
(707) 795-2025
TH-SA 7:30A-2:30P
Drop-off: all kinds of lamps.

SEBASTOPOL

**SEBASTOPOL
HARDWARE CENTER**
660 GRAVENSTEIN
HWY N
(707) 823-7688
M-SA 7:30A-7P, SU 8A-6P
Drop-off and fee: CFLs and
4-foot lamps only.

AS OF JANUARY 1, 2024, THE SALE AND DISTRIBUTION OF
SCREW AND BAYONET BASE TYPE FLUORESCENT LAMPS IN
CALIFORNIA IS BANNED.

FLUORESCENT LAMPS NEED SPECIAL DISPOSAL



Fluorescent lamps contain mercury vapor. Although the amount of
mercury vapor in each lamp is small, care should still be taken in
handling and disposing of fluorescent lamps.

WHAT IF A LAMP BREAKS?

- Open a window and leave the room for 15 minutes or more.
- Turn off central heat/air conditioning.
- Do not vacuum. Instead, collect the pieces using a stiff piece of
paper, such as an index card.
- Pat the area with the sticky side of packing tape to remove glass
shards.
- Put all material into a sealed container.
- Broken bulbs are accepted at the Household Hazardous Waste
Facility. **SEE HOUSEHOLD HAZARDOUS WASTE PAGE 4**

MATTRESSES

MATTRESS STEWARDSHIP LAW

There is a recycling fee of \$16 on the sale of
new mattresses, futons, and box springs. This
fee pays for the retailer take-back program.
Retailers are required by law to offer to pick
up a used mattress and/or box spring for
free when they deliver a new one.

Visit ByeByeMattress.com

COMMERCIAL VOLUME PICKUP

The Mattress Recycling Council (MRC) will
pick up mattresses from local mattress retailers,
universities, and hotels with at least 100 units.

MRC LARGE VOLUME PICKUP SERVICE

Joy Broussard: (707) 394-8620
cvp@mattressrecyclingcouncil.org

Clean and dry mattresses and box springs are accepted at all County
Refuse Disposal Sites for a fee. This service is free at Guerneville Transfer
Station. All mattresses are recycled. Mattresses are also accepted in the
residential bulky item pickup program.

SEE CURBSIDE SERVICES PAGE 8

**SEE COUNTY REFUSE
DISPOSAL SITES PAGE 18**

**UP TO 80% OF THE
COMPONENTS OF A
USED MATTRESS CAN BE
RECYCLED.**



SANTA ROSA

**CONSERVATION CORPS NORTH BAY – BYE
BYE MATTRESS RECYCLING SITE**
3555 AIRWAY DR (707) 303-3069
M-TH, SA 7:30A-3P
Free drop-off: mattresses, box springs, and
futons (any size); no crib mattresses or dog
beds. Call ahead to confirm availability.

FREE MATTRESS RECYCLING EVENTS

IN PARTNERSHIP WITH THE
CONSERVATION CORPS NORTH BAY AND
THE BYE BYE MATTRESS PROGRAM,
MATTRESS RECYCLING EVENTS ARE HELD
REGULARLY **SEE PAGE 21**



MEDICATIONS AND SHARPS/NEEDLES

SB 212 PHARMACEUTICAL AND SHARPS STEWARDSHIP BILL

IN 2018, CALIFORNIA PASSED THE PHARMACEUTICAL AND SHARPS STEWARDSHIP BILL REQUIRING PRODUCERS OF PHARMACEUTICALS AND SHARPS TO MANAGE AND OPERATE A COLLECTION AND DISPOSAL PROGRAM. THE STEWARDSHIP PROGRAMS HAVE ROLLED OUT ACROSS THE STATE. HERE'S HOW TO PROPERLY DISPOSE OF SHARPS AND MEDICATIONS UNDER THE NEW LAW FOR FREE:

SHARPS

- Visit SharpsTakeBackCalifornia.org to order a mail-back container.
- Some pharmacies may provide mail-back sharps containers for free at the point of purchase.
- Do not put medications in sharps containers.

MEDICATIONS

- Visit MedTakeBackCalifornia.org to find one of dozens of drop-off locations or to order a mail-back envelope.
- Do not put sharps in medication containers.

DROP-OFF AT HHW PROGRAMS

Sharps:

Sharps must be dropped off in FDA-approved sharps containers. No controlled substances. Sharps in non-approved containers will not be accepted.

Medications:

Medications may be dropped off at the HHW programs with the exception of controlled substances.

SEE HOUSEHOLD HAZARDOUS WASTE PAGE 4

WHAT MEDICATIONS ARE ACCEPTED IN THE PROGRAM?

- ACCEPTED:** Controlled Substances, schedule II-V • Prescription and over-the-counter pills and capsules • Liquid medications, including ointments, lotions, and creams (in sealed containers, please!) • Veterinary (pet) medications • Vitamins, supplements, homeopathic remedies • Medical patches • Inhalers (empty) • Medical samples
- NOT ACCEPTED:** Needles/sharps (must be safely packaged in sharps bin) • Cannabis (medical or recreational) • Illegal drugs • IV bags • Bloody or infectious waste • Personal care products (body lotion, shampoo, etc.) • Aerosol cans • Thermometers or medical devices

HOW TO USE DROP-OFF LOCATIONS

- Remove pills from containers and pour into a resealable plastic bag.
- Black out personal information.
- Reuse empty pill containers at home or place in garbage bin.

WHAT'S THE PROBLEM?

DANGER TO WORKERS



California State Law makes it illegal to dispose of home-generated sharps in the garbage or recycling bin.

This includes hypodermic needles, pen needles, intravenous needles, lancets, and other devices that are used to penetrate the skin for delivery of medications used in the care of people and animals.

When placed in the garbage or recycling bin, sharps can injure sanitation workers.

EASY FIXES AROUND THE HOME

HOST A COMMUNITY DYE BATH

WHEN YOU FIND A STAIN ON A TEXTILE, SET IT ASIDE UNTIL YOU AND FRIENDS OR FAMILY CAN SHARE A DYE BATH.

If you have access to outdoor space you can refresh your stained or dingy textiles with a dye bath. Invite some loved ones over to share the bounty!

What you'll need:

- a large container for the dye, a storage tub or large bucket work well
- dye of your choice
- water
- optional: gloves, especially if choosing a dark dye

Things to consider when choosing a dye:

- the material composition of the textiles you plan to dye
- natural or synthetic dye options
- if choosing natural, where to acquire your materials (including your kitchen and garden!)

Consider saving your clean and dry avocado pits (pink pigment) in the freezer for the next time you're ready to dye.



REDUCE YOUR EXPOSURE TO TOXIC CHEMICALS

GRADUALLY SWITCHING THE MATERIALS IN YOUR HOME FROM PLASTICS TO NATURAL MATERIALS LIKE WOOD, METAL, AND NATURAL FIBERS IS A GOOD PLACE TO START.

- Ensure the tools you use to prepare your food are free from plastic, especially the items that are heated (pans and spatulas) or that come in contact with knives (cutting boards) to minimize shedding.
- Prioritize natural fibers as the fabrics in our homes shed miniscule fibers when washed and used.
- Switch to solid bars or soap or refillable bottles.
- Buy local and do less online shopping to reduce plastic packaging and greenhouse gas emissions from transportation.
- Try reusable dryer balls in lieu of dryer sheets.
- Make or find cotton produce bags to bring with you to the farmers market and grocery store so you don't have to wrap your foods in plastic.



THANK YOU TO OUR FRIENDS!

A very special thank you to Anne-Marie Bonneau, the Zero Waste Chef, and Rancho Gordo Beans, for contributing their wisdom and experience to this guide!

GLOSSARY OF TERMS

CARBON FOOTPRINT The amount of greenhouse gases and specifically carbon dioxide emitted by something (such as a person's activities or a product's manufacture and transport) during a given period.

CATHODE RAY TUBE (CRT) A vacuum tube containing one or more electron guns, which emit electron beams that are manipulated to display images on a phosphorescent screen. This technology is used in older televisions and computer monitors.

CIRCULAR ECONOMY A system in which materials never become waste and nature is regenerated. In a circular economy, products and materials are kept in circulation through processes like maintenance, reuse, refurbishment, remanufacture, recycling, and composting.

COMPOST (verb) To convert a carbon-containing material, such as food, into compost; (noun) a mixture that consists largely of decayed organic matter and is used for adding beneficial microbes and nutrients to the soil.

DECONSTRUCTION An alternative to demolition that calls for buildings to be carefully and systematically dismantled or disassembled, and for the salvageable components to be sorted for future donation, sale, or reuse & recycling.

DIVERSION Materials and items not sent to the landfill and instead reused, recycled, composted, or otherwise kept in a circular economy.

EXTENDED PRODUCER RESPONSIBILITY (EPR) A policy approach that assigns producers responsibility for the end-of-life of products.

GREEN BUILDING The practice of creating structures and using processes that are environmentally responsible and resource-efficient throughout a building's life cycle from siting to design, construction, operation, maintenance, renovation, and deconstruction.

HOUSEHOLD HAZARDOUS WASTE A waste that has properties making it potentially dangerous or harmful to human health or the environment and that must be disposed with additional precautions.

LANDFILL A place to dispose of refuse and other waste material by burying it in a cell lined with plastic tarp or sheeting and covering it with soil. Modern landfills are carefully engineered with pipes and filters to capture water runoff and gas leakage to minimize environmental harm, but they are still a significant source of greenhouse gas emissions.

MATERIAL RECOVERY FACILITY (MRF) A specialized facility that takes in commingled recyclable materials and separates them by material type (e.g., glass, plastic, paper) mechanically or by hand, before each material type is sent to secondary processing facilities (e.g., paper mill) that create new products.

MUNICIPAL SOLID WASTE (MSW) Also called "trash" or "garbage" and sent to a landfill, this category of waste generally refers to common household waste, as well as office and retail wastes, but excludes industrial, hazardous, and construction wastes.

ORGANICS MATERIALS Food scraps, plant trimmings, wood, or anything that came from a living thing.

PLASTIC A material consisting of synthetic or semi-synthetic material typically derived from petrochemicals or substances such as cellulose or starch. Plastic is extremely versatile and durable, only breaking down into smaller pieces, and it may take hundreds to thousands of years to decompose.

RECYCLABLE Items that can be collected curbside or at drop-off locations, and that have value because they can be remanufactured into new items to be sold again.

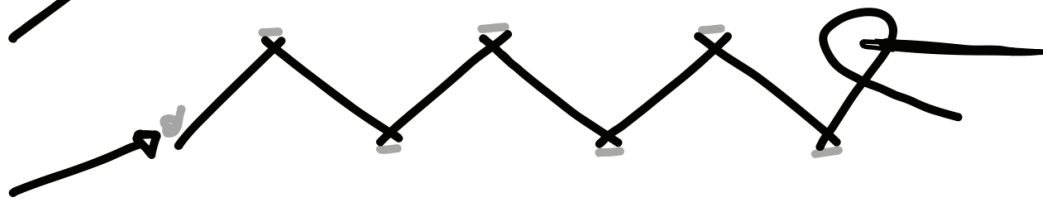
REUSE Using an object or material again and again for the same purpose or for a different purpose, or modifying the form of the product to function in another way. **SEE PAGE 3 FOR MORE INFORMATION.**

TOXIC WASTE A category of hazardous waste that is harmful or fatal when ingested or absorbed. Synonymous with the warning label "poison," these are substances that can cause harm or death when exposed to living organisms. All toxic waste is hazardous waste, but not all hazardous waste is toxic.

LEARN HOW TO MEND BY HAND!



running stitch



catch stitch



back stitch



whip stitch

top of fabric
bottom of fabric

